

I-84, Karcher Rd to Franklin Blvd

Community Workshop #1

December 13, 2017



YOUR Safety ●●●▶ YOUR Mobility ●●●▶ YOUR Economic Opportunity



Welcome and introductions

Amy Schroeder, ITD GARVEE Program Manager



YOUR Safety ●●●▶ YOUR Mobility ●●●▶ YOUR Economic Opportunity

Workshop Objectives

- Introduce the I-84 improvements and other Canyon County transportation projects.
- Present and gather comments on ITD's proposed improvements to I-84 between the Karcher Interchange and Franklin Blvd.
- Explain next steps in the project.



YOUR Safety ●●●▶ YOUR Mobility ●●●▶ YOUR Economic Opportunity

3



Other Canyon County transportation projects

Clair Bowman, City of Nampa



YOUR Safety ●●●▶ YOUR Mobility ●●●▶ YOUR Economic Opportunity

4

I-84, Karcher Interchange Modification



- Mutual city and state benefit
- Create a second through southbound lane
- Close Exit 33A
- Reconfigure Exit 33B
- Add left turns



YOUR Safety ●●●▶ YOUR Mobility ●●●▶ YOUR Economic Opportunity

5

Nampa Transportation Master Plan



- Update existing city-wide Transportation Plan
 - Reflect projects already funded
 - Dramatic growth
 - New traffic patterns
 - Revised funding expectations



YOUR Safety ●●●▶ YOUR Mobility ●●●▶ YOUR Economic Opportunity

6



ITD projects on Interstate 84

Amy Schroeder, ITD



YOUR Safety ●●●▶ YOUR Mobility ●●●▶ YOUR Economic Opportunity

7

Interstate 84

- I-84 was built in 1966 and is antiquated. Ongoing maintenance is no longer sufficient.
- Travel times are expected to double by 2040 without improvements. *(Communities in Motion 2040, COMPASS)*
- Widening I-84 between Nampa and Caldwell will:
 - ✓ Improve safety
 - ✓ Address congestion
 - ✓ Benefit the regional economy for many years



YOUR Safety ●●●▶ YOUR Mobility ●●●▶ YOUR Economic Opportunity

8

I-84, Karcher to Franklin

- 2008 Environmental Assessment (FONSI) & Concept Design
- October 2017 begin design (2018 completion)
- Survey & geotechnical field work
- Traffic analysis
- Highway & bridge design
- Construction staging & maintaining traffic flow



YOUR Safety ●●●▶ YOUR Mobility ●●●▶ YOUR Economic Opportunity

9

Schedule

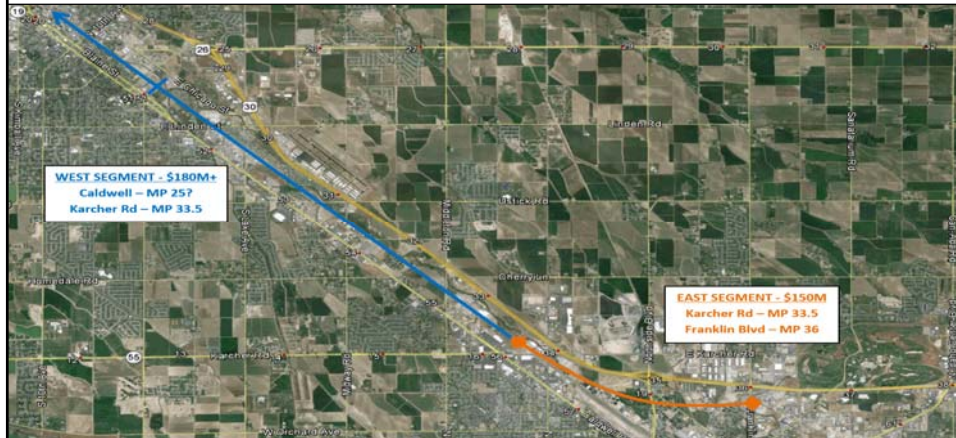
TIMEFRAME	ACTIVITY
Fall 2017 - Spring 2018	Preliminary engineering
December 2017	Community Workshop #1
Spring 2018	Develop final design plans
Spring 2018	Community Workshop #2
Fall 2018	Complete final design plans
Summer/Fall 2018 – 2021	Construction



YOUR Safety ●●●▶ YOUR Mobility ●●●▶ YOUR Economic Opportunity

10

ITD projects on I-84



- I-84 Karcher Interchange to Franklin Blvd. Interchange
- I-84 Environmental Study (Caldwell to Karcher)



YOUR Safety ●●●▶ YOUR Mobility ●●●▶ YOUR Economic Opportunity

11

I-84 Environmental Study

- Partnership with City of Caldwell and Canyon County
- Next steps:
 - ✓ Conduct traffic study
 - ✓ Gather field data
 - ✓ Review environmental disciplines
 - ✓ Public outreach & meetings



YOUR Safety ●●●▶ YOUR Mobility ●●●▶ YOUR Economic Opportunity

12

Funding

- In 2017, the Idaho Legislature approved \$300 million GARVEE bonds.
 - Idaho Transportation Board allocated up to \$150 million GARVEE bonds to the I-84 corridor.
- Idaho Transportation Board allocated \$112 million State and Federal funds to the I-84 corridor.
- ITD is remaining flexible and is exploring other funding sources for I-84.



YOUR Safety ●●●▶ YOUR Mobility ●●●▶ YOUR Economic Opportunity

13



I-84, Karcher Interchange to Franklin Blvd. Interchange

Doug Camenisch, Parametrix



YOUR Safety ●●●▶ YOUR Mobility ●●●▶ YOUR Economic Opportunity

14

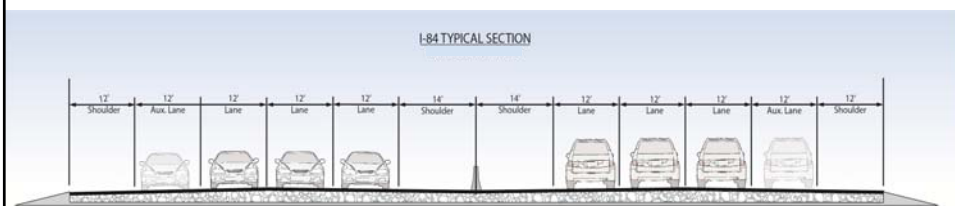
I-84, Karcher to Franklin



YOUR Safety ●●●▶ YOUR Mobility ●●●▶ YOUR Economic Opportunity

15

I-84 Karcher to Franklin



- ✓ Three lanes in each direction
- ✓ Wider shoulders
- ✓ Improved safety features (guardrail & median barrier)



YOUR Safety ●●●▶ YOUR Mobility ●●●▶ YOUR Economic Opportunity

16

Construction Goals

- ✓ Maintain two lanes of traffic in each direction during the day.
- ✓ Lane restrictions at night.
- ✓ Occasional closures at night.



Interstate 84

Comment sheet questions:

1. Do you have any comments about ITD's proposed I-84 improvements between the Karcher Interchange and Franklin Boulevard Interchange?
2. Are there any improvements ITD is missing?
3. Other questions or comments.



Karcher Overpass



I-84, Karcher Overpass

Jared Holyoak, ITD Project Manager



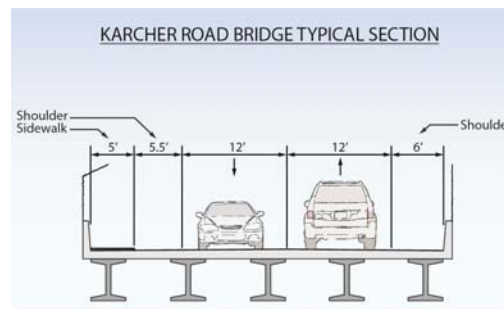
YOUR Safety ●●● YOUR Mobility ●●● YOUR Economic Opportunity

19

Karcher Overpass

Reconstruct the overpass to accommodate additional I-84 lanes underneath.

- ✓ One lane in each direction on the overpass
- ✓ Wider shoulders
- ✓ Sidewalk
- ✓ ITD is planning to close the overpass during construction
 - First construction project



YOUR Safety ●●● YOUR Mobility ●●● YOUR Economic Opportunity

20

Karcher Overpass

Comment sheet questions:

1. Do you have any comments about ITD's proposed Karcher Overpass improvements?
2. Do you have any issues or concerns with ITD closing the Karcher Road Overpass during construction?
3. Other questions or comments.



YOUR Safety ●●●▶ YOUR Mobility ●●●▶ YOUR Economic Opportunity

21



Northside Interchange

Doug Camenisch, Parametix



YOUR Safety ●●●▶ YOUR Mobility ●●●▶ YOUR Economic Opportunity

22

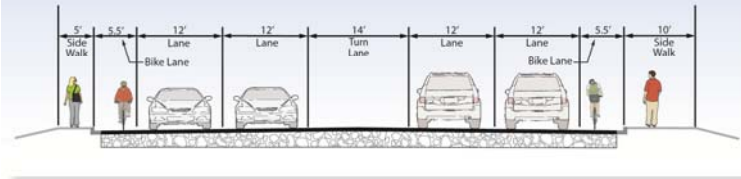
Northside Interchange



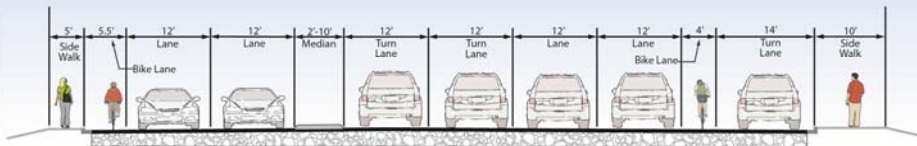
YOUR Safety ●●● YOUR Mobility ●●● YOUR Economic Opportunity

Northside Interchange

NORTHSIDE BLVD TYPICAL SECTION



NORTHSIDE BLVD TYPICAL SECTION



YOUR Safety ●●● YOUR Mobility ●●● YOUR Economic Opportunity

Northside Interchange

Comment sheet questions:

1. Do you have any issues or concerns ITD needs to consider in the Northside Interchange design?
2. What do you like or dislike about the Northside Interchange "SPUI" design?
3. Are there Northside Interchange improvements ITD is missing?
4. Other questions or comments.



YOUR Safety ●●●▶ YOUR Mobility ●●●▶ YOUR Economic Opportunity

25



Wrap up and next steps

Amy Schroeder, ITD



YOUR Safety ●●●▶ YOUR Mobility ●●●▶ YOUR Economic Opportunity

26

Next Steps

- ✓ Review comments received tonight and continue design process.
- ✓ Develop final design and construction plans
- ✓ Host Community Workshop #2 (spring 2018)

- ✓ Watch for invitation to participate in I-84 Environmental Study



Stay Involved

For up-to-date project information go to:

- ✓ ITD.Idaho.gov/projects (District 3)

Send comments to:

- ✓ 84corridor@itd.idaho.gov

Call:

- ✓ 208-334-8002



Thank You

ITD is committed to working with businesses and residents in Canyon County and other members of the community who use I-84.



YOUR Safety ●●●▶ YOUR Mobility ●●●▶ YOUR Economic Opportunity

29